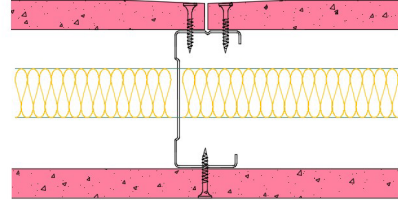


## 70-K-56(25) - SPEEDLINE System Data Sheet - Version V1 (24-10-23)

SPEEDLINE 70mm 'C' Stud Partition @600mm Ctrs,  
with Knauf 15mm Fire Panel each side, 25mm APR



### System Performance Breakdown

Fire Resistance:

BS476 Part 22:1987:

Test Ref & Date or Applied Ref & Report:

Max Height:

Thickness:

Duty Grade: BS 5234: Part 2:1992:

Sound Insulation:

**60/60 Minutes (Integrity/Insulation).**

**BRE 248834 - BRE Report P102396-1011B**

**Refer to Speedline Specification Clause**

**102 mm.** (At Base Track, Excluding Finishes)

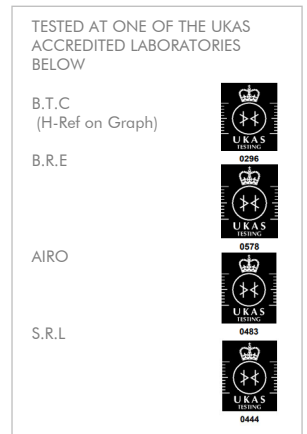
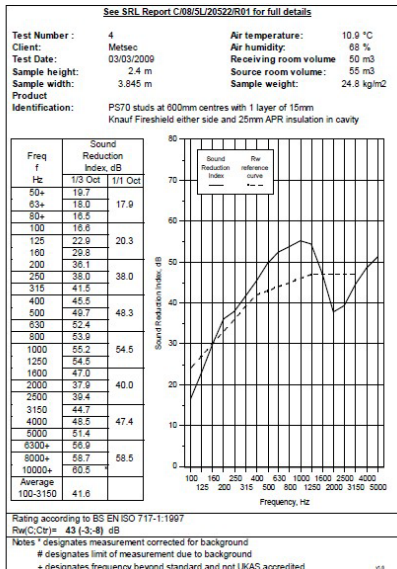
**Heavy - Annexes A-F**

**43 R<sub>w</sub>dB**, Date Tested or Assessed Against - 03/03/2009



Test Certificate No. 5506

Contract: C/08/SL/20522  
Page: 1 of 1  
Date: 20 April 2009



George Thomson  
Project Engineer

Trevor Hickman  
Deputy Technical Manager

SPEEDLINE Drywall Systems, Adsetts House, 16 Europa View, Sheffield Business Park, Sheffield, S9 1XH.

Tel: 0114 231 8030.

Email: [enquiries@speedlinedrywall.co.uk](mailto:enquiries@speedlinedrywall.co.uk)

(As per the requirements set out in ISO/IEC 17025:2017 regarding test data the results stated have been carried out by voestalpine Metsec plc as part of the contract to supply Speedline Metal Sections to SIG Plc)